



FIXTURE TYPE: _____

PROJECT NAME: _____



GENERAL INFORMATION:

The SLIM Recessed Wall Luminaire is a sleek and durable LED fixture designed for stairways and pathways. Constructed from die-cast dark gray powder-coated aluminum, it operates on 110–277V and features a 2mm tempered glass lens for precise light diffusion. With IP65 and IK10 protection ratings and an IP67 copper and nickel-coated cable gland, SLIM ensures reliable performance in demanding outdoor environments. Available in Sanded Dark Gray, Sanded Black, and Sanded Silver Gray finishes, it combines modern aesthetics with long-lasting durability.

FIXTURE TYPE:

Recessed Wall Luminaires - Stair/Pathway

LIGHTING:

LED

LED

VOLTAGE:

110-277V



MATERIAL:

12# Die-casting dark grey powder coated aluminum

LENS:

Tempered glass T=2mm

CABLE GLAND:

IP67 Copper and nicked coated

RECESSED SLEEVE:

B1BG0257: PC/ABS ALLOYS 074#

B1FL0157: PC/ABS ALLOYS 076#

IP RATING:

IP 65

IP65

IK RATING:

IK 10

FINISHING:

Sanded Dark Gray

Sanded Black

Sanded Silver Gray

sales@gordonbullard.com

www.bullardoutdoor.com

1-877-964-4646



991 South Gull Lake Dr

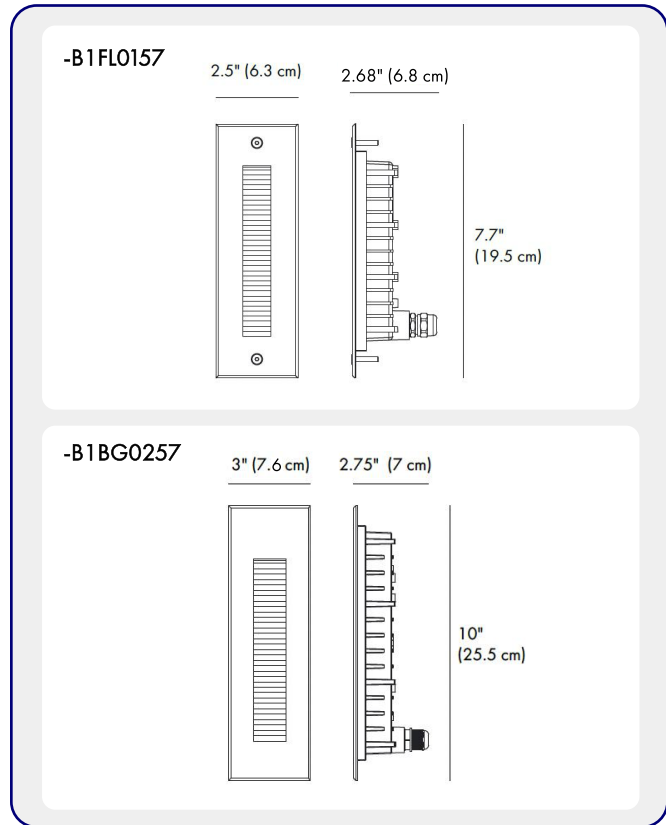
Richland, MI 49083

USA

FIXTURE TYPE: _____

PROJECT NAME: _____

NOTES:



HOW TO ORDER:

CODE:

Example:
CODE: BO-SLM-KPG-RWL-XXX-XXX-XXX-XXX-XXX-XX

BO-SLM-KPG-RWL-
B1FL0157-K30-
KAP7037-DIM-B38-30

1 MODELS:

CODE -B1FL0157

DIMENSIONS:

Length - L: 2.5" (6.3 cm)
Height - H: 7.7" (19.5 cm)
Depth - P: 2.68" (6.8 cm)

LIGHT SOURCE:

LED / 1 x 2W / 105 mA / 64 lm / 110-277V / CRI 80

CODE -B1BG0257

DIMENSIONS:

Length - L: 3" (7.6 cm)
Height - H: 10" (25.5 cm)
Depth - P: 2.75" (7 cm)

LIGHT SOURCE:

LED / 2 x 1.5W / 150 mA / 160 lm / 110-277V / CRI 80

2 CCT OPTIONS:

-K30 3000K
-CUS Custom on request*

3 FINISH OPTIONS:

-KAP7037 Sanded Dark Gray
-RAL 9005 Sanded Black
-KAP9022 Sanded Silver Gray

4 DIMMING OPTIONS:

-DIM 1-10V
-PWM Pulse Width Modulation
-DALI DALI (Digital Addressable Lighting Interface)

5 BEAM ANGLE:

-B38-30 30°
-B38-40 40°
-B38-50 50°
-B38-60 60°
-B38-25x50 25°x50°

sales@gordonbullard.com
www.bullardoutdoor.com
1-877-964-4646



991 South Gull Lake Dr
Richland, MI 49083
USA

FIXTURE TYPE: _____

PROJECT NAME: _____

NOTES:



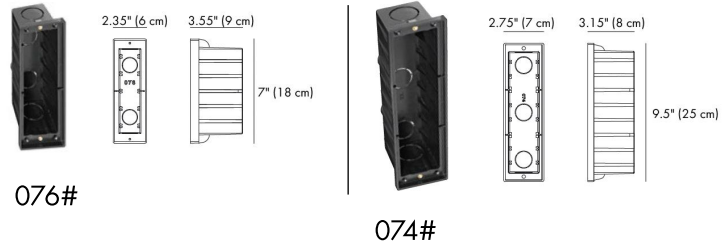
HOW TO ORDER:

CODE:

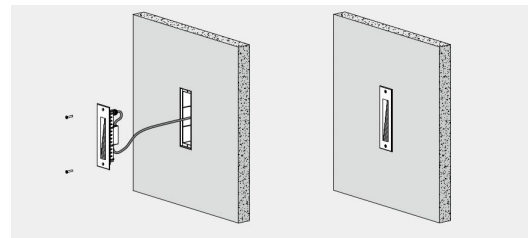
Example:
CODE: BO-SLM-KPG-RWL-XXX-XXX-XXX-XXX-XXX-XX

BO-SLM-KPG-RWL-
B1FL0157-K30-
KAP7037-DIM-B38-30

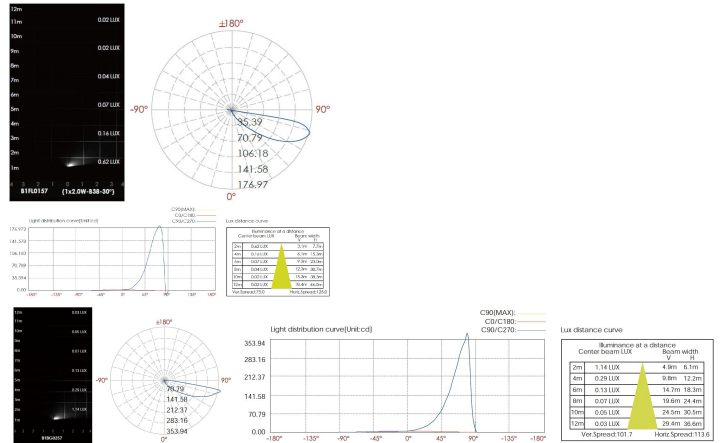
6 RECESSED SLEEVE: (included)



7 DIAGRAM OF INSTRUCTION:



8 PHOTOMETRIC INFO:



sales@gordonbullard.com
www.bullardoutdoor.com
1-877-964-4646



991 South Gull Lake Dr
Richland, MI 49083
USA