



# ILLUMINATED FURNITURE

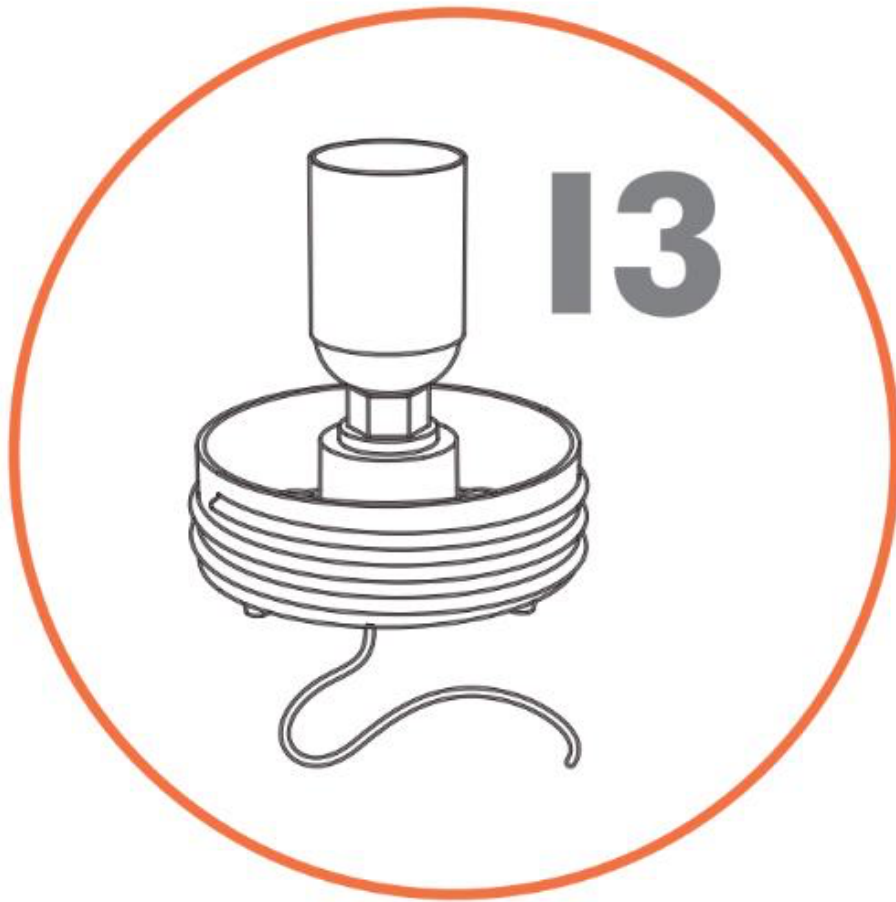
INSTALLATION TYPE:  
SURFACE-MOUNT

**E26**



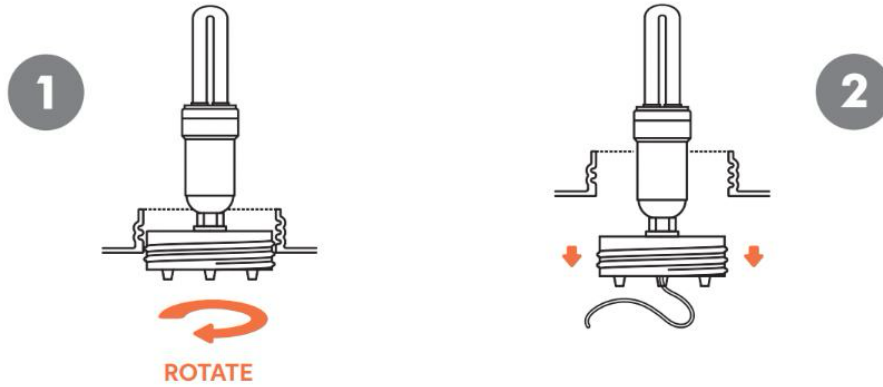
**IP55**

**IP54**

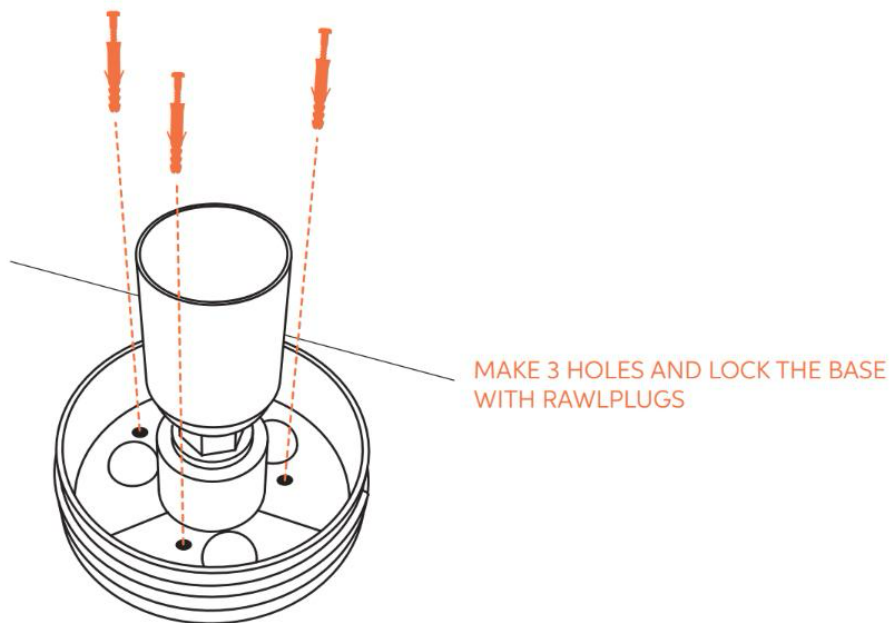


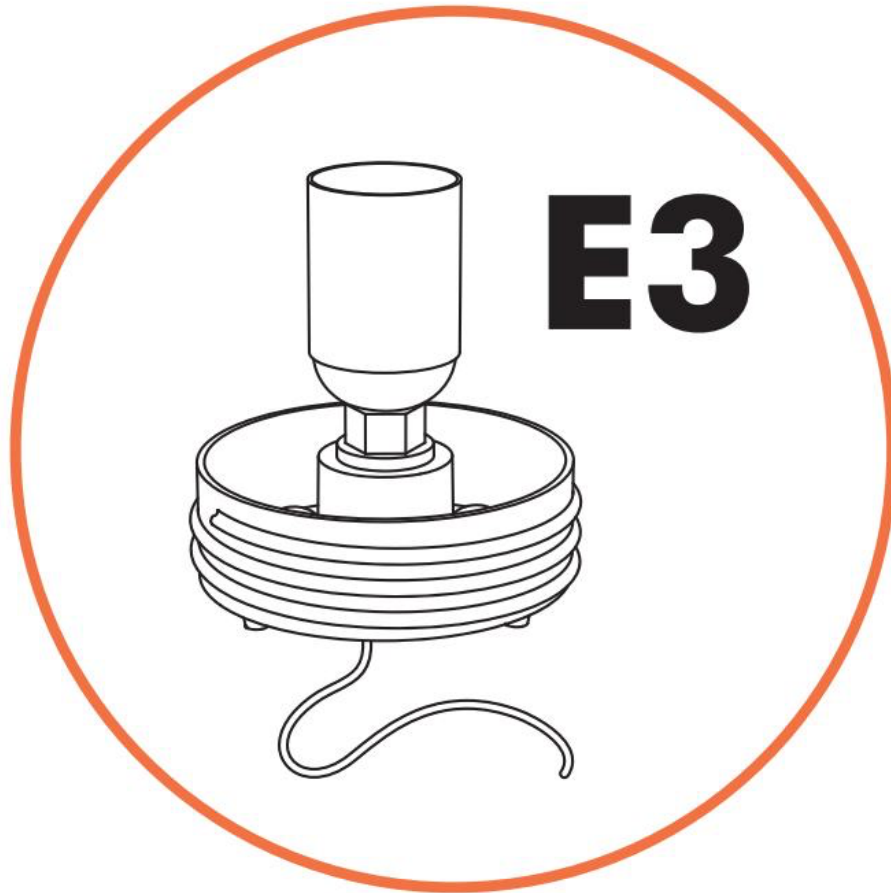
**13**  
BASE MODEL

**BULB REPLACEMENT**



**SYSTEM FOR FLOOR/WALL MOUNTING**





**E3**

**E3**  
BASE MODEL

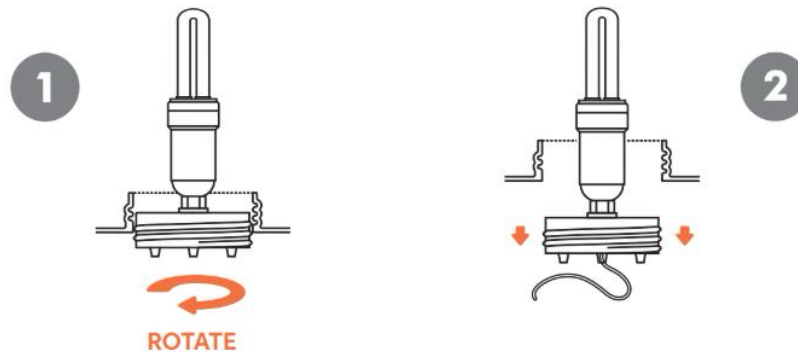
P. 4

[sales@gordonbullard.com](mailto:sales@gordonbullard.com)  
[www.bullardoutdoor.com](http://www.bullardoutdoor.com)  
1 877-964-4646



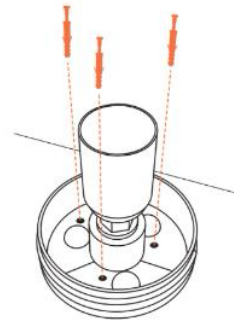
991 South Gull Lake Dr.  
Richland, MI 49083  
USA

**BULB REPLACEMENT**



**SYSTEM FOR FLOOR/WALL MOUNTING\***

MAKE 3 HOLES AND LOCK THE  
 BASE WITH RAWLPLUGS



Warning: this operation could modify the degree of the waterproof protection (IP55). BULLARD BOLLARDS assumes no responsibility for any possible malfunction of the product. It is recommended to seal the holes with silicone sealant to prevent the passage of liquids.

**EARTH SPIKE POSITIONING\*\***



\*\* Earth spike not included. It must be ordered separately.



**CANDY LIGHT**  
INFRARED RGBW LED MODULE

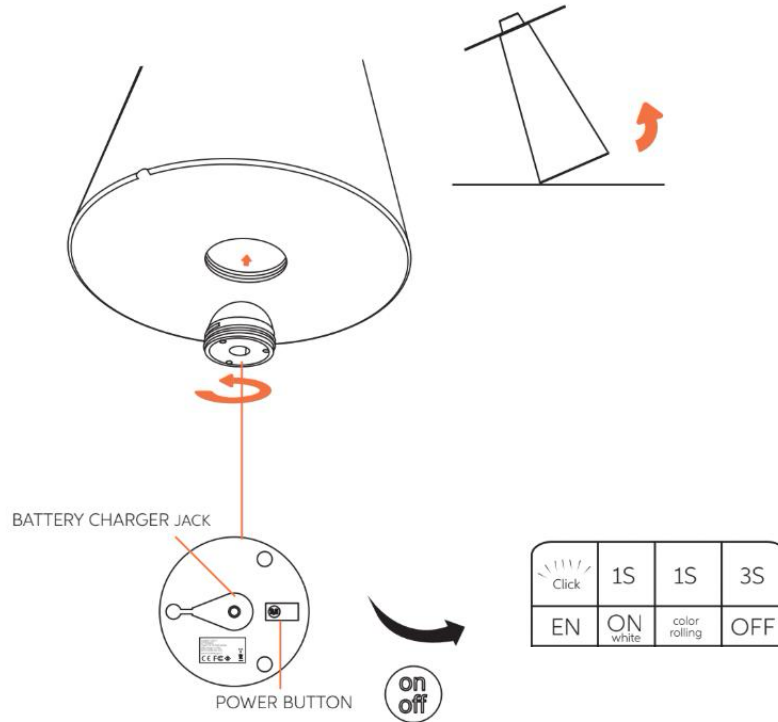
P.6

[sales@gordonbullard.com](mailto:sales@gordonbullard.com)  
[www.bullardoutdoor.com](http://www.bullardoutdoor.com)  
1 877-964-4646



991 South Gull Lake Dr.  
Richland, MI 49083  
USA

CANDY LIGHT MODULE PLACEMENT



CANDY LIGHT REMOTE CONTROL

