



FIXTURE TYPE: \_\_\_\_\_

PROJECT NAME: \_\_\_\_\_



**GENERAL INFORMATION:**

The BEREL Garden Spotlight by Bullard Outdoor is a high-quality LED luminaire designed for outdoor landscape and architectural lighting. Built with a 12# die-cast aluminum body and a tempered glass T=4mm lens, it offers durability and efficiency over 85%. Operating on 110–277V with IP66 and IK07 ratings, it ensures reliable performance in various weather conditions. Available in Sanded Bronze, Dark Gray, Black, and White finishes, the BEREL combines sleek aesthetics with robust engineering for elegant and lasting outdoor illumination.

**FIXTURE TYPE:**

Spotlight - Garden Luminaires

**LIGHTING**

LED

LED

**VOLTAGE:**

110-277V

110-277V

**MATERIAL:**

12# Die-casting aluminum finishing

**LENS:**

Tempered glass.T=4mm / All-in-one OPTICS lens, efficiency≥85%

**CRI:**

80

**IP RATING:**

IP 66

IP66

**IK RATING:**

IK 07

**FINISHING:**

Sanded Dark Gray

Sanded Black

Sanded White

**CABLE GLAND:**

IP68 PG-9 PA66

sales@gordonbullard.com

www.bullardoutdoor.com

1-877-964-4646



991 South Gull Lake Dr

Richland, MI 49083

USA

FIXTURE TYPE: \_\_\_\_\_

PROJECT NAME: \_\_\_\_\_

NOTES:

**HOW TO ORDER:**

**CODE:**

Example:  
CODE: BO-BRL-KPG-SPT-XXX-XXX-XXX-XXX

BO-BRL-KPG-SPT-B3BG0127-  
K30-KAP7008-B55-15-B-17B  
-CA3045

**1 MODELS:**

**CODE -B3BG0127**

DIMENSIONS:

Diameter - Ø: 3.54" (9 cm)  
Height - H: 4.88" (12.4 cm)  
Length - L: 4.02" (10.2 cm)

LIGHT SOURCE:

LED / 1 x 6W / 65 mA / 500 lm / 110-277V

**CODE -B3BH0129**

DIMENSIONS:

Diameter - Ø: 5.12" (13 cm)  
Height - H: 7.09" (18 cm)  
Length - L: 5.98" (15.2 cm)

LIGHT SOURCE:

LED / 1 x 12W / 114 mA / 1080 lm / 110-277V

**CODE -B3BI0170**

DIMENSIONS:

Diameter - Ø: 6.3" (16 cm)  
Height - H: 7.64" (19.4 cm)  
Length - L: 5.63" (14.3 cm)

LIGHT SOURCE:

LED / 1 x 18W / 173 mA / 1800 lm / 110-277V

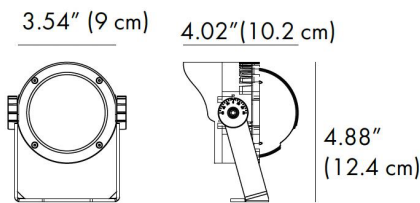
**2 CCT OPTIONS:**

-K30 3000K  
-CUS Custom on request\*

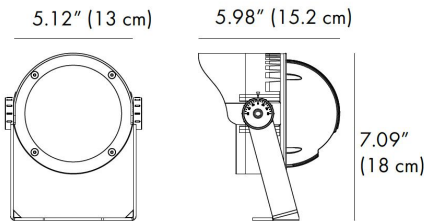
**3 FINISH OPTIONS:**

-KAP7037 Sanded Dark Gray  
-RAL 9005 Sanded Black  
-RAL9003 Sanded White

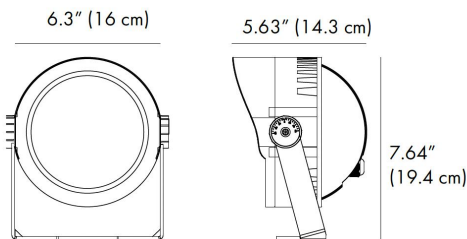
**-B3BG0127**



**-B3BH0129**



**-B3BI0170**



sales@gordonbullard.com  
www.bullardoutdoor.com  
1-877-964-4646



991 South Gull Lake Dr  
Richland, MI 49083  
USA

FIXTURE TYPE: \_\_\_\_\_

PROJECT NAME: \_\_\_\_\_

NOTES:



**HOW TO ORDER: \_\_\_\_\_ CODE: \_\_\_\_\_**

Example:  
CODE: BO-BRL-KPG-SPT-XXX-XXX-XXX-XXX

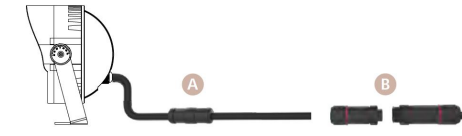
BO-BRL-KPG-SPT-B3BG0127-K30-KAP7008-B55-15-B-17B-CA3045

**4 BEAM ANGLE:**

available only for -B3BG0127 model		available only for -B3BH0129 model		available only for -B3BI0170 model	
-B55-15	15°	-B56-15	15°	-B57-12	12°
-B55-24	24°	-B56-24	24°	-B57-25	25°
-B55-38	38°	-B56-38	38°	-B57-36	36°
-B55-45	45°	-B56-45	45°	-B57-45	45°
-B55-60	60°	-B56-60	60°	-B57-60	60°

**5 WATER PROOF SOLUTION: (optional)**

- A Water-Stopper (Included)**  
A IP-66 water-stopper is added in the end of luminaires as standard assembly which is also an important system for water resistance.
- B IP67 Jiffy quick plug/socket connector (Option)**  
A IP-67 connector is as an optional assembly and ensures that water vapor will not enter into luminaires directly.



**6 ACCESSORIES:**

SPIKE (STAINLESS STEEL / PC-ABS alloys)

-17B	-13B
	
3.11" (7.9 cm) 10.87" (27.6 cm)	3.11" (7.9 cm) 10.87" (27.6 cm)

**ROUND SURFACE MOUNTING BASE**

	-BS002	-B3BG0127		3.54" (9 cm) 0.89" (2.26 cm)
	-BS003	-B3BH0129 -B3BI0170		4.49" (11.4 cm) 0.89" (2.26 cm)

sales@gordonbullard.com  
www.bullardoutdoor.com  
1-877-964-4646



991 South Gull Lake Dr  
Richland, MI 49083  
USA

FIXTURE TYPE: \_\_\_\_\_

PROJECT NAME: \_\_\_\_\_

NOTES:  
\_\_\_\_\_



**HOW TO ORDER:**

Example:  
CODE: BO-BRL-KPG-SPT-XXX-XXX-XXX-XXX

**CODE:**

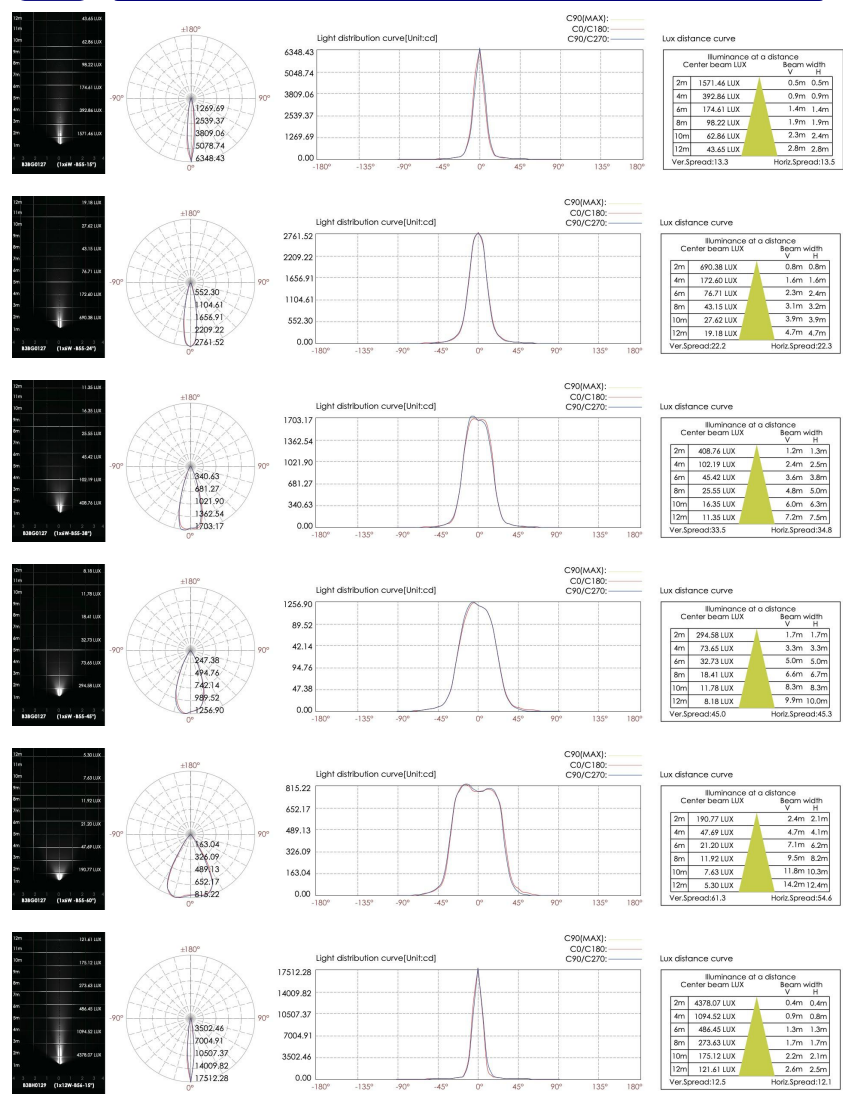
BO-BRL-KPG-SPT-B3BG0127-  
K30-KAP7008-B55-15-B-17B  
-CA3045

**7 FEATURE:**



Gear: The gear between the luminaire housing and the U bracket to prevent sliding.

**8 PHOTOMETRIC INFO:**



sales@gordonbullard.com  
www.bullardoutdoor.com  
1-877-964-4646



991 South Gull Lake Dr  
Richland, MI 49083  
USA

FIXTURE TYPE: \_\_\_\_\_

PROJECT NAME: \_\_\_\_\_

NOTES:  
\_\_\_\_\_

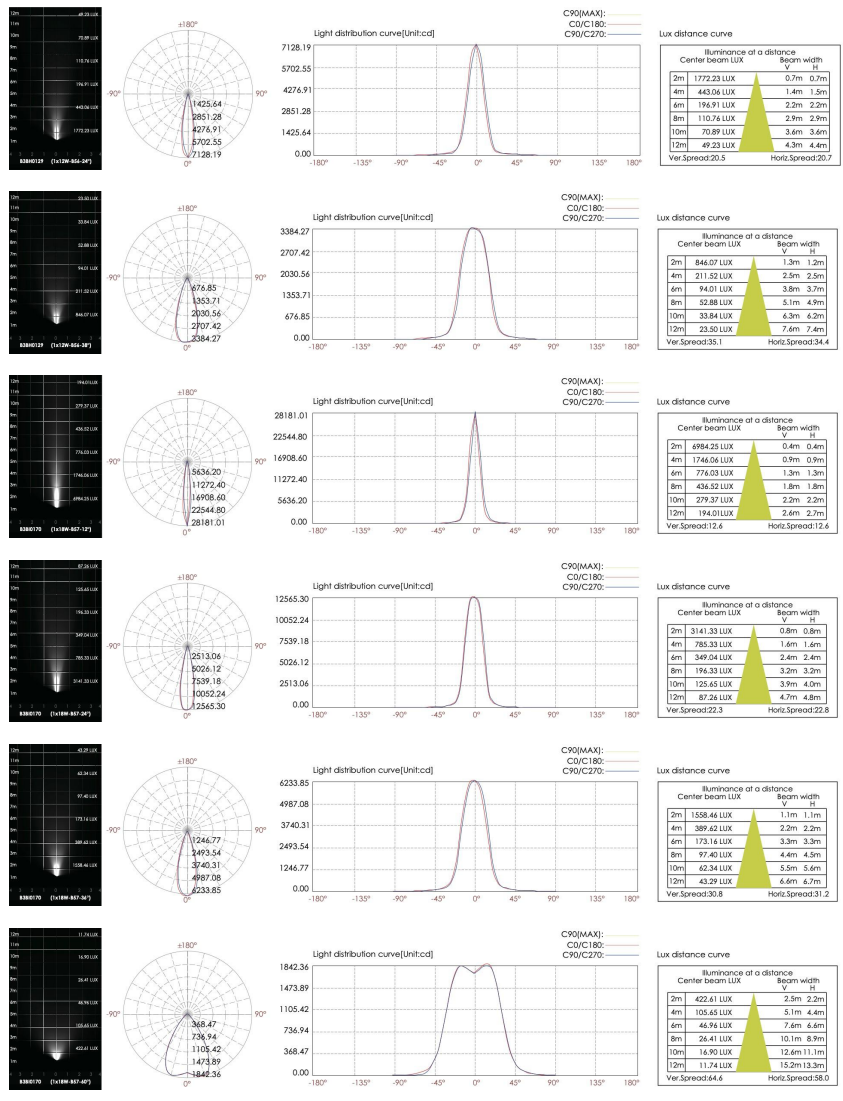


**HOW TO ORDER:**

Example:  
CODE: BO-BRL-KPG-SPT-XXX-XXX-XXX-XXX

**CODE:**

BO-BRL-KPG-SPT-B3BG0127-  
K30-KAP7008-B55-15-B-17B  
-CA3045



sales@gordonbullard.com  
www.bullardoutdoor.com  
1-877-964-4646



991 South Gull Lake Dr  
Richland, MI 49083  
USA