



FIXTURE TYPE: \_\_\_\_\_

PROJECT NAME: \_\_\_\_\_



**GENERAL INFORMATION:**

The SARIN Garden Spotlight by Bullard Outdoor is a sleek and durable LED luminaire ideal for outdoor and landscape lighting. Built from 12# die-cast aluminum with a tempered glass lens (T=4mm), it operates on 110–277V and delivers efficient, high-quality illumination with a CRI of 80. Featuring IP66 and IK06 protection, SARIN ensures long-lasting performance in any environment and is available in Sanded Bronze, Dark Gray, Black, and White finishes.

**FIXTURE TYPE:**

Spotlight - Garden Luminaires

**LIGHTING**

LED

LED

**VOLTAGE:**

110-277V

110-277V

**MATERIAL:**

12# Die-casting aluminum finishing

**LENS:**

Tempered glass.T=4mm

**CRI:**

80

**IP RATING:**

IP 66

IP66

**IK RATING:**

IK 06

**FINISHING:**

Sanded Dark Gray  
Sanded Black  
Sanded White

sales@gordonbullard.com  
www.bullardoutdoor.com  
1-877-964-4646



991 South Gull Lake Dr  
Richland, MI 49083  
USA

FIXTURE TYPE: \_\_\_\_\_

PROJECT NAME: \_\_\_\_\_

NOTES:

**HOW TO ORDER:**

**CODE:**

Example:

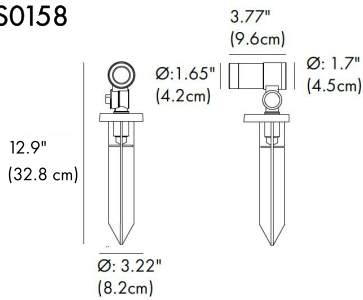
CODE: BO-SRN-KPG-SPT-XXX-XXX-XXX-XXX-XXX-XXX

BO-SRN-KPG-SPT-  
B3TMS0158-K30-KAP7008-  
B33-9-B-18A-CA3009-  
Mh024

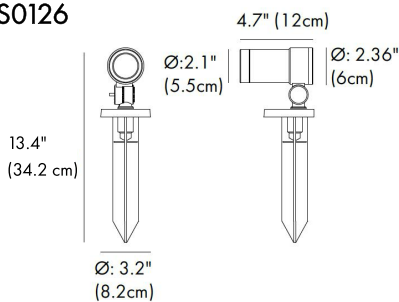
1

**MODELS:**

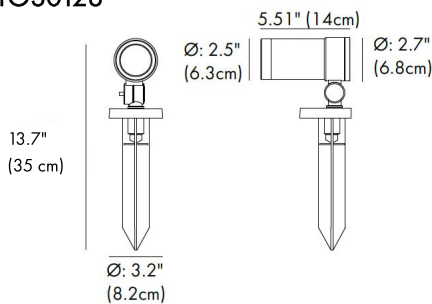
**-B3TMS0158**



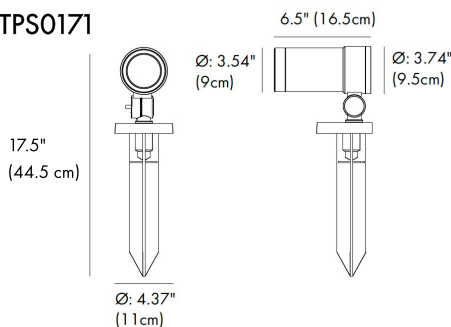
**-B3TNS0126**



**-B3TOS0128**



**-B3TPS0171**



**CODE -B3TMS0158**

DIMENSIONS:

Diameter - Ø: 1.65" (4.2 cm)  
Height with spike - H: 12.9" (32.8 cm)  
Length - L: 3.77" (9.6 cm)

LIGHT SOURCE:

LED / 1 x 3W / 45 mA / 274 lm / 110-277V

**CODE -B3TNS0126**

DIMENSIONS:

Diameter - Ø: 2.1" (5.5 cm)  
Height with spike - H: 13.4" (34.2 cm)  
Length - L: 4.7" (12 cm)

LIGHT SOURCE:

LED / 1 x 6W / 56 mA / 740 lm / 110-277V

**CODE -B3TOS0128**

DIMENSIONS:

Diameter - Ø: 1.65" (4.2 cm)  
Height with spike - H: 13.7" (35 cm)  
Length - L: 5.51" (14 cm)

LIGHT SOURCE:

LED / 1 x 10W / 107 mA / 1315 lm / 110-277V

**CODE -B3TPS0171**

DIMENSIONS:

Diameter - Ø: 3.54" (9 cm)  
Height with spike - H: 17.5" (44.5 cm)  
Length - L: 6.5" (16.5 cm)

LIGHT SOURCE:

LED / 1 x 20W / 180 mA / 2071 lm / 110-277V

sales@gordonbullard.com

www.bullardoutdoor.com

1-877-964-4646



991 South Gull Lake Dr

Richland, MI 49083

USA

FIXTURE TYPE: \_\_\_\_\_

PROJECT NAME: \_\_\_\_\_

NOTES:



**HOW TO ORDER: \_\_\_\_\_ CODE: \_\_\_\_\_**

Example:  
 CODE: BO-SRN-KPG-SPT-XXX-XXX-XXX-XXX-XXX-XXX

BO-SRN-KPG-SPT-  
 B3TMS0158-K30-KAP7008-  
 B33-9-B-18A-CA3009-  
 Mh024

**2 CCT OPTIONS:**

- K30 3000K
- CUS Custom on request\*

**3 FINISH OPTIONS:**

- KAP7037 Sanded Dark Gray
- RAL 9005 Sanded Black
- RAL9003 Sanded White

**4 BEAM ANGLE:**

available only for -B3TMS0158 model	available only for -B3TNS0126 model	available only for -B3TOS0128 model
-B33-9 9°	-B51-20 20°	-B52-20 20°
-B33-15 15°	-B51-28 28°	-B52-24 24°
-B33-20 20°	-B51-36 36°	-B52-36 36°
-B33-45 45°	-B51-60 60°	-B52-60 60°
-B33-60 60°		
available only for -B3TPS0171 model	available only for -B3TMS0158 model	
-B66-15 15°	-B73-30 30°	
-B66-20 20°		
-B66-25 25°		
-B66-38 38°		
-B66-55 55°		

**5 WATER PROOF SOLUTION: (optional)**

- A Water-Stopper(Included)**  
 A IP-66 water-stopper is added in the end of luminaires as standard assembly which is also an important system for water resistance.
- B IP67 Jiffy quick plug/socket connector(Option)**  
 A IP-67 connector is as an optional assembly and ensures that water vapor will not enter into luminaires directly.




sales@gordonbullard.com  
 www.bullardoutdoor.com  
 1-877-964-4646



991 South Gull Lake Dr  
 Richland, MI 49083  
 USA

FIXTURE TYPE: \_\_\_\_\_

PROJECT NAME: \_\_\_\_\_

NOTES:



**HOW TO ORDER:**

**CODE:**

Example:  
 CODE: BO-SRN-KPG-SPT-XXX-XXX-XXX-XXX-XXX-XXX

BO-SRN-KPG-SPT-  
 B3TMS0158-K30-KAP7008-  
 B33-9-B-18A-CA3009-  
 Mh024

**6 ACCESSORIES:**

**SPIKE - PC-ABS alloys**

**-17A**



**-18A**



-17A for -B3TPS0171

-18A for -B3TMS0158, -B3TNS0126, -B3TOS0128 models

**SPIKE - STAINLESS STEEL**

**-13A**



**-12A**



-13A for -B3TPS0171

-12A for -B3TMS0158, -B3TNS0126, -B3TOS0128 models

**TREE POLE STRAP**

**-RD003**



**-RD002**



-RD002 for -B3TPS0171

-RD003 for -B3TMS0158, -B3TNS0126, B3TOS0128 models

**BEVEL CUT HOOD**

-CA3009 -B3TMS0158



-CA3010 -B3TNS0126



-CA3011 -B3TOS0128



-CA3013 -B3TPS0171



sales@gordonbullard.com  
 www.bullardoutdoor.com  
 1-877-964-4646



991 South Gull Lake Dr  
 Richland, MI 49083  
 USA

FIXTURE TYPE: \_\_\_\_\_

PROJECT NAME: \_\_\_\_\_

NOTES:  
\_\_\_\_\_



**HOW TO ORDER:**

**CODE:**

Example:  
CODE: BO-SRN-KPG-SPT-XXX-XXX-XXX-XXX-XXX-XXX

BO-SRN-KPG-SPT-  
B3TMS0158-K30-KAP7008-  
B33-9-B-18A-CA3009-  
Mh024

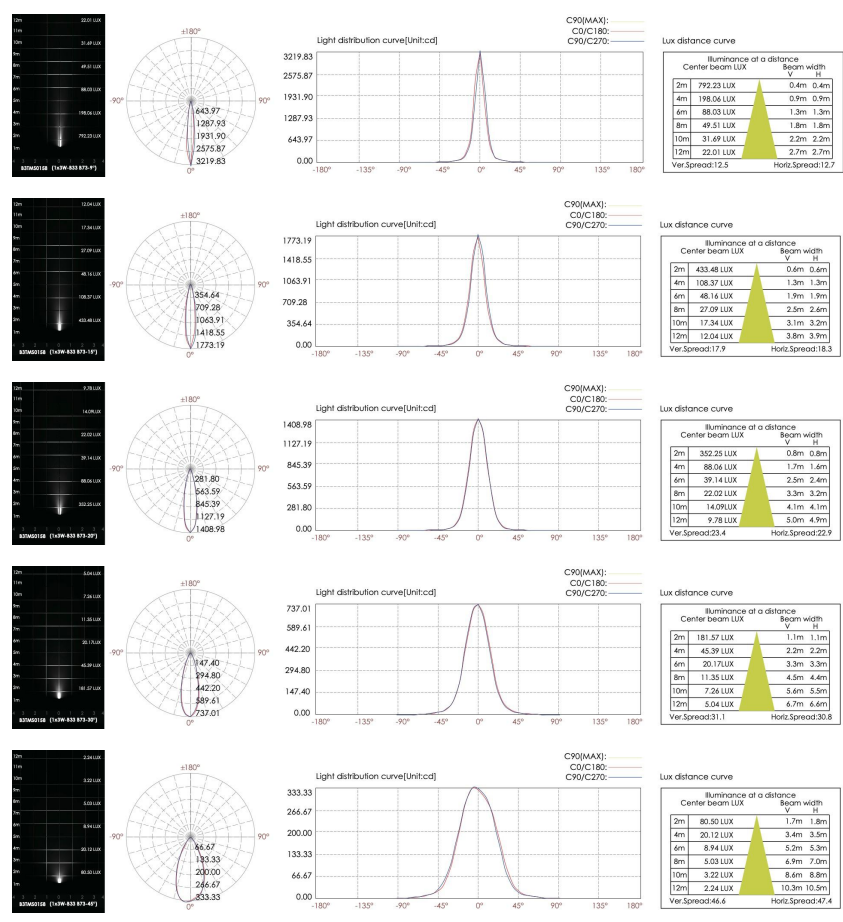
**6 ACCESSORIES:**

**HONEYCOMB LOUVER**

- Mh024 -B3TMS0158
- Mh025 -B3TNS0126
- Mh026 -B3TOS0128
- Mh027 -B3TPS0171



**7 PHOTOMETRIC INFO:**



sales@gordonbullard.com  
www.bullardoutdoor.com  
1-877-964-4646



991 South Gull Lake Dr  
Richland, MI 49083  
USA

FIXTURE TYPE: \_\_\_\_\_

PROJECT NAME: \_\_\_\_\_

NOTES:

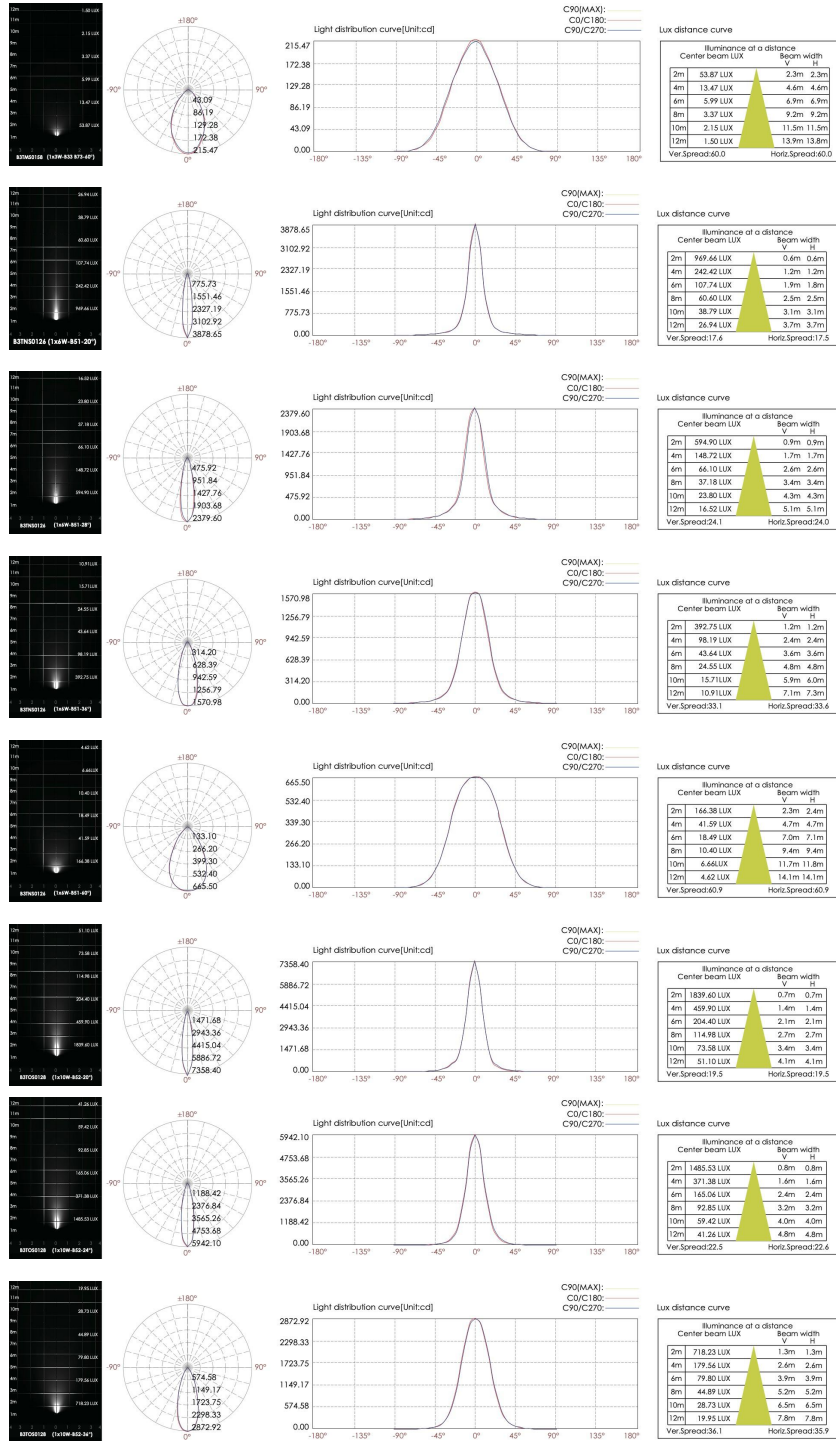


**HOW TO ORDER:**

Example:  
 CODE: BO-SRN-KPG-SPT-XXX-XXX-XXX-XXX-XXX-XXX

**CODE:**

BO-SRN-KPG-SPT-  
 B3TMS0158-K30-KAP7008-  
 B33-9-B-18A-CA3009-  
 Mh024



sales@gordonbullard.com  
 www.bullardoutdoor.com  
 1-877-964-4646



991 South Gull Lake Dr  
 Richland, MI 49083  
 USA

FIXTURE TYPE: \_\_\_\_\_

PROJECT NAME: \_\_\_\_\_

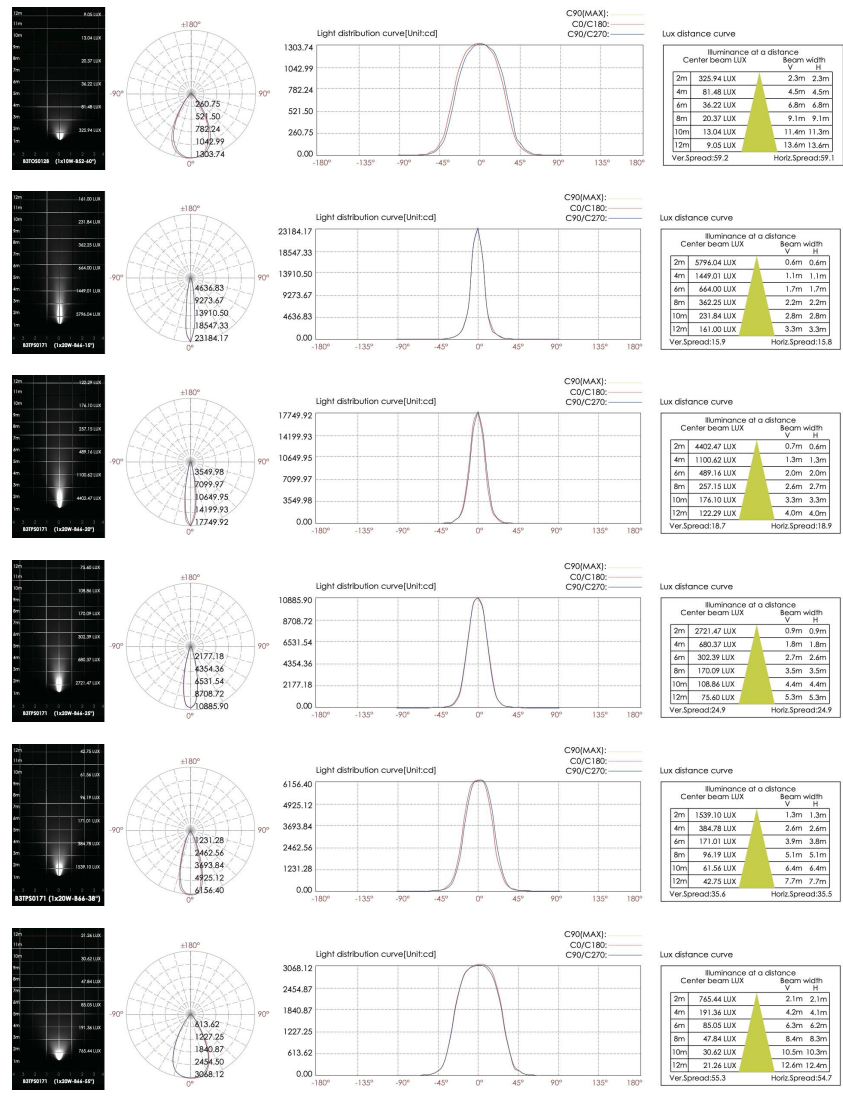
NOTES:



**HOW TO ORDER:**

**CODE:**

Example:  
**CODE: BO-SRN-KPG-SPT-XXX-XXX-XXX-XXX-XXX-XXX**  
**BO-SRN-KPG-SPT-B3TMS0158-K30-KAP7008-B33-9-B-18A-CA3009-Mh024**



sales@gordonbullard.com  
www.bullardoutdoor.com  
1-877-964-4646



991 South Gull Lake Dr  
Richland, MI 49083  
USA